

**PRINCIPAL DIMENSIONS**

LENGTH OVERALL	18.306 m
LENGTH WATERLINE	16.105 m
BEAM MAX	5.286 m
DRAFT	2.420 m
DISPLACEMENT Lightship	30.75 tonnes
DISPLACEMENT full load	34.00 tonnes
BALLAST	10.25 tonnes
I outer	23.522 m
I inner	21.690 m
J outer	7.050 m
J inner	6.700 m
E	7.504 m
P	21.003 m

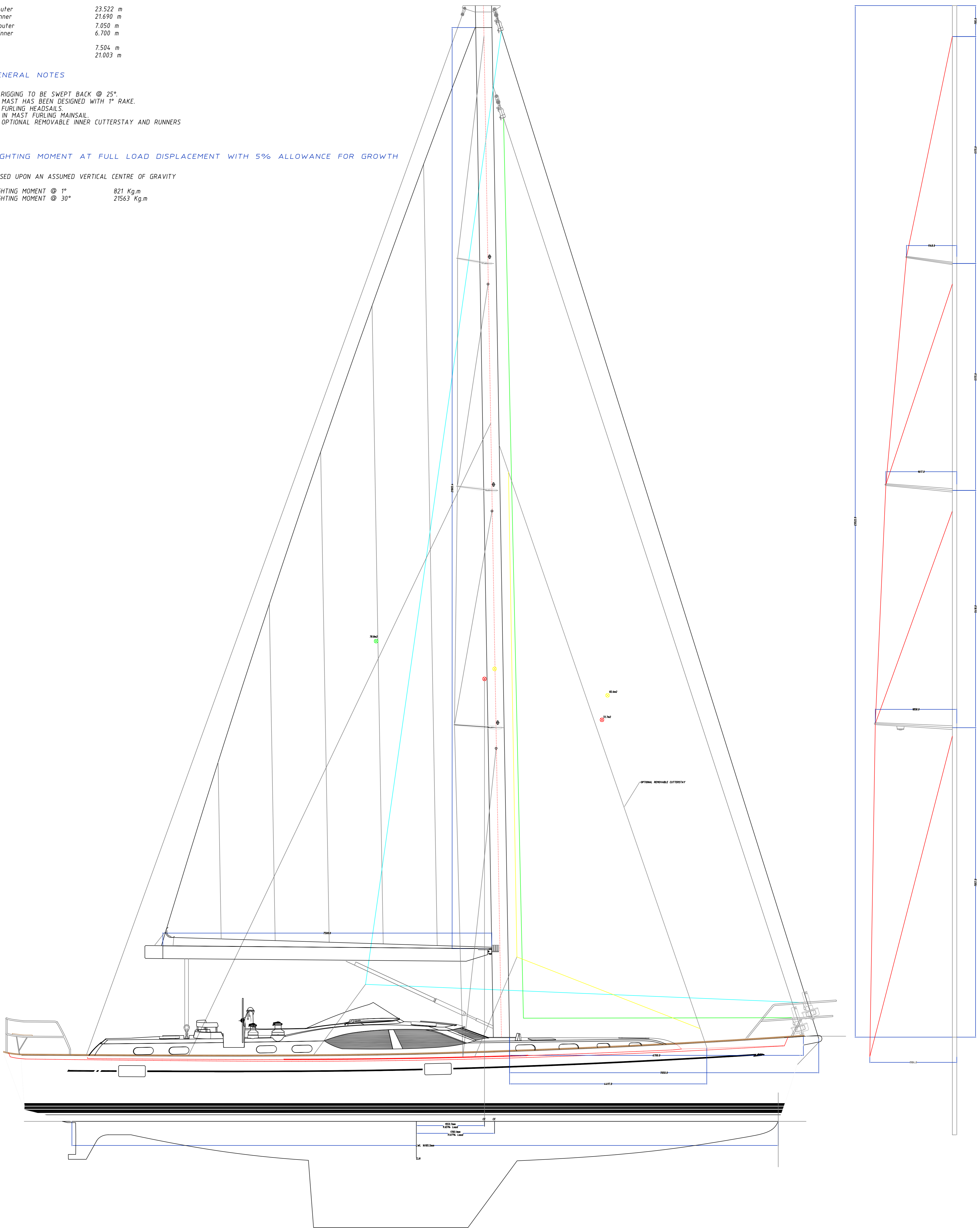
**GENERAL NOTES**

1. RIGGING TO BE SWEEPED BACK @ 25°.
2. MAST HAS BEEN DESIGNED WITH 1° RAKE.
3. FURLING HEADSAILS.
4. IN MAST FURLING MAINSAIL.
5. OPTIONAL REMOVABLE INNER CUTTERSTAY AND RUNNERS

**RIGHTING MOMENT AT FULL LOAD DISPLACEMENT WITH 5% ALLOWANCE FOR GROWTH**

BASED UPON AN ASSUMED VERTICAL CENTRE OF GRAVITY

RIGHTING MOMENT @ 1°	821 Kg.m
RIGHTING MOMENT @ 30°	21563 Kg.m



Issue	Date	Notes	Checked By
Issue 5	17.03.07	Optional lower cutterstay and runners added	HRH
Issue 4	08.03.07	Sweep back changed to 25 deg, runners removed	HRH
Issue 3	01.03.07	Displacement and righting moments updated	HRH
Issue 2	23.01.07	Displacement and righting moments updated	HRH
Issue 1	07.07.06	Dimensions and notes added	HRH

DESIGN : S-624 Passport 60  
 TITLE : Sail plan  
 DATE : 07-07-06  
 SCALE : 1:40 (A1)  
 DRG NO : S-624-1  
 COMP REF : 624sp

**dixon**  
 yacht design

Yacht Designers  
 & Naval Architects  
 'Greydown', School Road,  
 Old Bonchester, Southeypton,  
 England SO31 8BX,  
 Tel: +44 (0)13 80465280  
 Fax: +44 (0)13 80466203  
 email: enquiries@dixonycdesign.com  
 website: www.dixonycdesign.com

This drawing is the copyright of Angus S. Pirriose Ltd and is confidential. It must not be used for manufacture or copied or communicated to any other person without the express permission of Angus S. Pirriose Ltd.